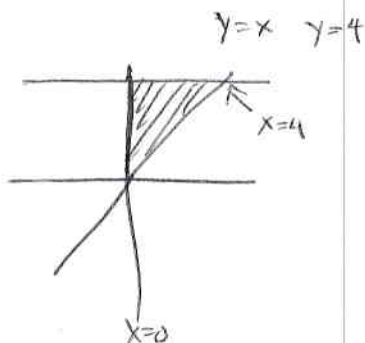


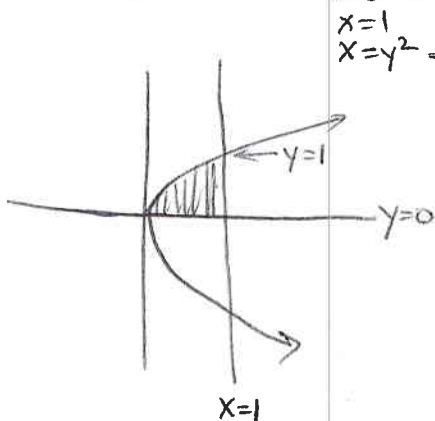
Instructions: Show all work. Give exact answers (yes, that means fractions, square roots and exponentials, and not decimals) unless specifically directed to give a decimal answer. This will require some operations to be done by hand even if not specifically directed to. Be sure to complete all parts of each question.

1. Change the order of integration to find the value of the integral $\int_0^4 \int_x^4 e^{-y^2} dy dx$.



$$\begin{aligned} \int_0^4 \int_0^y e^{-y^2} dx dy &= \int_0^4 x e^{-y^2} \Big|_0^y dy = \int_0^4 y e^{-y^2} dy \\ &= -\frac{1}{2} e^{-y^2} \Big|_0^4 = -\frac{1}{2} [e^{-16} - e^0] = \frac{1}{2} [1 - e^{-16}] \end{aligned}$$

2. Change the order of integration to find the value of the integral $\int_0^1 \int_{y^2}^1 \sqrt{x} \sin x dx dy$.



$$\begin{aligned} x=1 \\ x=y^2 \Rightarrow y=\sqrt{x} \end{aligned}$$

$$\int_0^1 \int_0^{\sqrt{x}} \sqrt{x} \sin x dy dx$$

$$= \int_0^1 y \sqrt{x} \sin x \Big|_0^{\sqrt{x}} dx =$$

$$\int_0^1 x \sin x dx$$

$$\begin{aligned} u=x & \quad dv=\sin x dx \\ du=dx & \quad v=-\cos x \end{aligned}$$

$$-x \cos x + \int + \cos x dx =$$

$$-x \cos x + \sin x \Big|_0^1 = -\cos(1) + \sin(1) + 0 - 0$$

$$= \sin(1) - \cos(1)$$